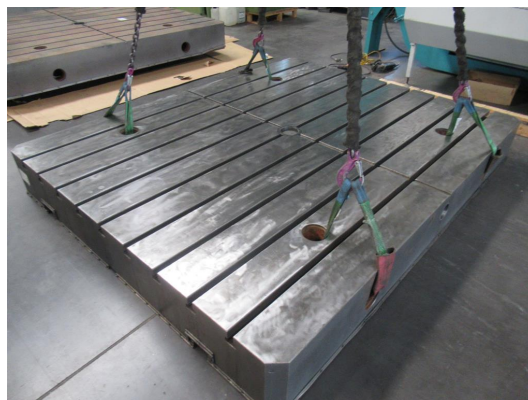


bolster plate

WMW AP 2500x2000x275



stock-no.:	1101113
type of machine:	bolster plate
make:	WMW
type:	AP 2500x2000x275
year of manufacture:	-
type of control:	other
country of origin:	Germany
storage location:	Leipzig 5
delivery time:	immediately
freight basis:	EXW, free on truck unpacked
price:	on request



technical details

floor-plate length:	2500 mm
plate width:	2000 mm
plate height:	275 mm
weight of the machine ca.:	ca. 5,5 pro Platte to t

additional information

of very good cast steel plates for sale free.
verpackt in Ölpapier und Folie

Surface finished
T-slots according to DIN 650: a=36; h=65; b=60 c=26mm
distance from the edge: 105mm; center distance: 250mm