

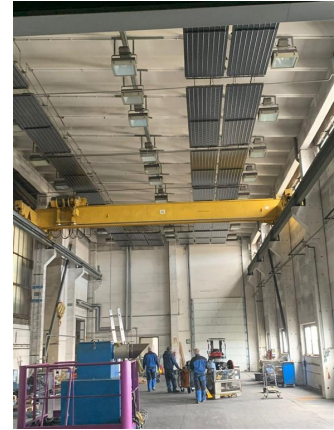
Bridge Crane - Single Beam

Takraf 6/4310/233



Sorry the machine has been sold already!

| | |
|----------------------|-----------------------------|
| stock-no.: | 1201959 |
| type of machine: | Bridge Crane - Single Beam |
| make: | Takraf |
| type: | 6/4310/233 |
| year of manufacture: | 1990 |
| type of control: | other |
| country of origin: | Germany |
| storage location: | Flanschenwerk |
| delivery time: | 10/2022 |
| freight basis: | EXW, free on truck unpacked |
| price: | on request |



technical details

| | |
|--------------------------------|--------------------------------|
| lifting capacity: | 8 t |
| lift: | mm |
| span width: | 10500 mm |
| protection class: | IP 44 |
| stroke speed: | 8,0 m/min. |
| rope diameter: | 18 mm |
| precise lift: | m/min |
| electric control: | |
| electrics - voltage/frequency: | 380 / 50 V/Hz |
| connected load: | kW |
| travel of hook: | mm |
| weight of the machine ca.: | ca. 3,0 + ca. 3,0 + ca. 0,75 t |
| dimensions L x W x H: | Brücke: 10,75 x 2,9 x 1,2 m |
| hoist dimensions: | 1,7 x 1,6 x 1,3 m |

additional information

Hoist with wire rope hoist
SK 1,42 / 8t
Balcancar podem 12T 0172M year 1989, hooks
manual operation
2x carrier extensions 1,4 x 1,3 x 0,4m (ca. 0,3to)
Der Kran ist demontiert Standort Halle A und halle C-D

i.D.